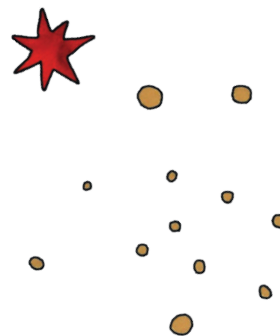


# The Grass House

A National Poetry Day resource from CLPE

EARLY YEARS FOUNDATION STAGE



This resource was produced in collaboration with the Centre for Literacy in Primary Education (CLPE). Find more poets and poetry on CLPE's website, visit: [clpe.org.uk/poetry](https://clpe.org.uk/poetry)

CLPE is a charity working to improve literacy teaching in schools and settings.  
Registered Charity No: 1092698

# Find refuge in a special place...

Read the poem out loud together and talk about it.  
*You might find it helpful to read it more than once.*

## The Grass House

The grass house  
Is my private place.  
Nobody can see me  
In the grass house.  
Feathery plumes  
Meet over my head.  
Down here,  
In the green, there are:  
Seeds  
Weeds  
Stalks  
Pods  
And tiny little flowers.  
  
Only the cat  
And some busy, hurrying ants  
Know where my grass house is.





# Find refuge in a special place...

Read the poem out loud together and talk about it. *You might find it helpful to read it more than once.*



## The Grass House

The grass house  
Is my private place.  
Nobody can see me  
In the grass house.  
Feathery plumes  
Meet over my head.  
Down here,  
In the green, there are:  
Seeds  
Weeds  
Stalks  
Pods  
And tiny little flowers.

Only the cat  
And some busy, hurrying ants  
Know where my grass house is.



The Grass House by Shirley Hughes ©  
Out and About by Shirley Hughes, Walker Books

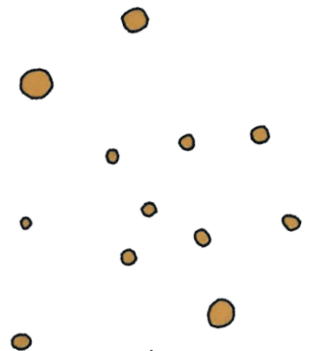


Find refuge in a special place...

# Think about the poem

You could discuss this as a whole class, in small groups or think about it on your own.

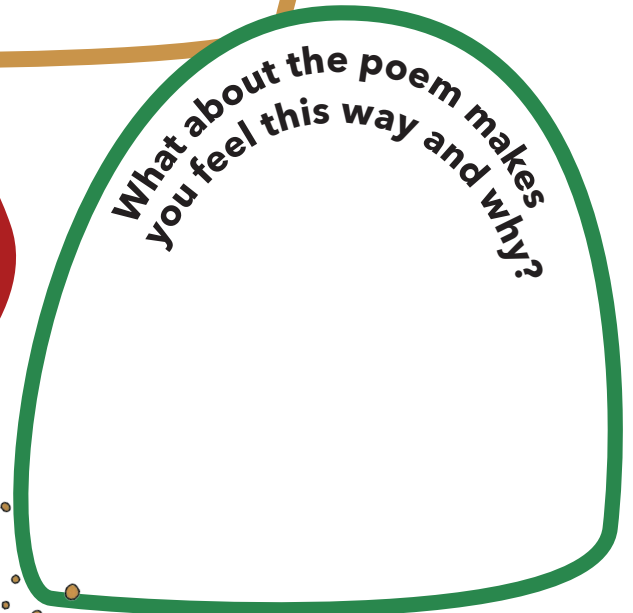
**What do you think the poem is about?**



**How does the poem make you feel?**



**What about the poem makes you feel this way and why?**



**Read the poem again.**

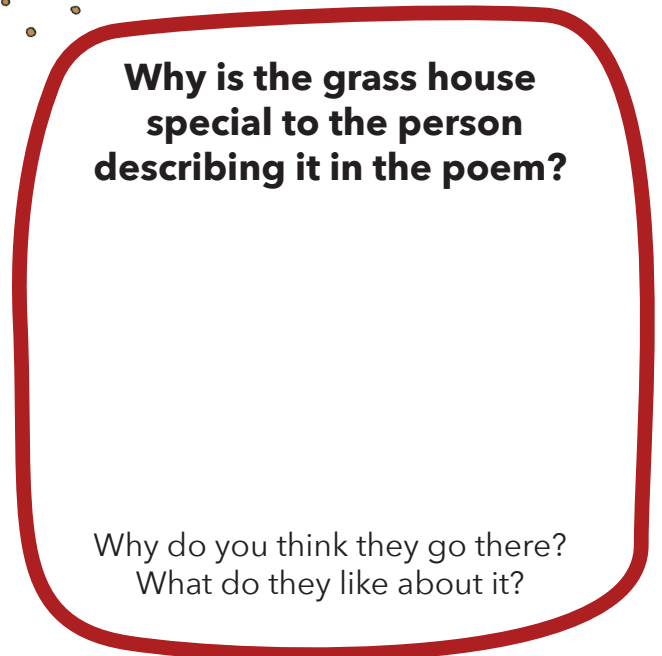
**Are there any words or sentences which stay in your mind?**



Why was this?

**Why is the grass house special to the person describing it in the poem?**

Why do you think they go there?  
What do they like about it?





Find refuge in a special place...

# Where's your special place?

Is it inside or outside? It could be up high, or underneath something else. Perhaps your special place is a secret...

**Do you have any places which feel special to you?**

Why are they special?  
What do you like about them?  
*In the poem they enjoy being hidden,  
"nobody can see me".*

**What might you tell someone else about your special place?**

Are you alone, or do you share your special place with others? *In the poem the cat and the ants share the special place.*

**What sounds or smells might you notice at your special place?**

It could be things like the birds singing, or the sound of other children playing.

**What might you see at your special place?**

Include details such as colours and shapes and describe the things you see.  
*In the poem they describe "feathery plumes" and "tiny little flowers".*

## Find refuge in a special place...



## Write your own poem

Use the words you've written describing your special place to help you write your own poem. Think about how you can use words and different rhythms to describe what makes it special...

**Tip: When you have finished writing, read it through aloud and ask yourself;**

Does your poem make sense? Does reading it help you imagine being in your special place? Could you add or remove anything to make it better?

This image shows a single sheet of white paper with horizontal ruling lines. The lines are evenly spaced and run across the width of the page. There is no handwriting or other markings on the paper.

Whenever you create something, don't forget it belongs to you. An automatic shield called copyright protects your work.



Find refuge in a special place...

# Images help with understanding



Poems are often accompanied by illustrations to help the words in the poem come to life visually. This illustration of the little girl sitting quietly in her grass house really helps us to imagine ourselves there.



**Tip:** Think about how to place yourself in an illustration of your special place and show how it makes you feel.



Find refuge in a special place...



# Create art with your poem

**Think about the words in your poem. What colours, shapes or images might emphasise the meaning?**

## **Some tips to get you started:**

Use your best handwriting. Make a background and write your poem over the top or leave a space for the words and fill in the illustration around it. Perhaps you could create an artwork on the computer and experiment with fonts and digital images. Use your imagination and have fun!

A large, empty rectangular box with a thin black border, intended for students to create their artwork or illustration around their poem.

**Why not create a class display of your illustrated poems, so others in your school can enjoy your poetic creativity?**





# Build drama with poetry

Spoken word performances can add another exciting dimension to poetry.

**Perhaps the most confident poets and performers among you could perform your poems in assembly, so the rest of your school can discover all the enjoyment poetry can bring.**

The poem shares the specialness of this place for the narrator. How might you convey these feelings in a performance of the poem?

## Some things to consider:

- Think about how fast, slow, loud or quietly you speak the lines.
- Are there any facial expressions or actions you could perform to accompany the poem?
- Could you use music, or sounds to enhance the performance?
- Could you use lighting to change the mood throughout the poem?
- Maybe you could work in small groups and share ideas about how to perform each others poems.
- When you have decided how to perform your poem, practice a few times before performing it for others, in your class or at home.
- If you don't want to perform your poem, perhaps you could think about how to perform a published poem instead.



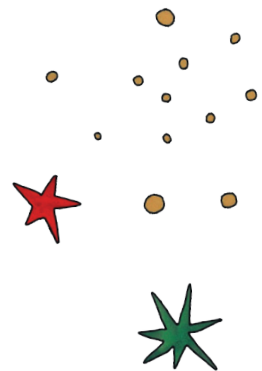
Find refuge in a special place...

# The music of poetry

Many singer-songwriters also write poetry. Why not try setting your chosen poem to music to see how the meaning or imagery within it could be enhanced or changed.

## Some things to consider:

- Think about the rhythm and flow of the words in your chosen poem.
- What sounds come to mind as you read the words?
- Use percussion, found objects, instruments or even your body to make sounds.
- Use your voice or layer multiple voices to create sounds.
- Use digital sound effects to build a soundtrack to enhance the meaning.
- How does it change the effect if you whisper, sing or shout the words?







**#NationalPoetryDay**  
[www.nationalpoetryday.co.uk](http://www.nationalpoetryday.co.uk)

**Your words. Your voice. Your work.**

Whenever you create something, don't forget it belongs to you. You're the creator and an automatic shield called copyright protects your work. What do you do with your work is up to you - you can give it away for free or sell it. It's your choice.

To find out more about an author's rights, check out the Authors' Licensing and Collecting Society's resources on copyright.



Supported using public funding by  
**ARTS COUNCIL  
ENGLAND**



**Forward  
Arts  
Foundation**



**Authors'  
Licensing and  
Collecting  
Society**

